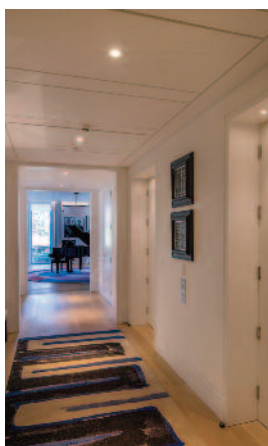


Acoustic doors and doorsets

- Standard Shadbolt doors and doorsets fitted with perimeter seals can provide good sound insulation up to 35dB SRI Rw.
- High-performance acoustic doors up to 44dB SRI Rw can also be supplied. These are particularly suited to corporate office suites, directors' offices, boardrooms, auditoriums, lecture theatres etc, and where matching to other doors is important. *See our website for a table of performance values.*
- Purpose-made for each project, with extensive freedom to choose frame and edge details, glazing designs and ironmongery.
- Performance confirmed by independent testing on normally operable doors with non-specialist ironmongery. (High performance doors may require powered operation to comply with Building Regulations Part M).
- Doors can be used to comply with Building Regulations Part E for dwellings, and Schools Building Bulletin 93.
- Normally supplied as doorsets to provide an assurance that the required acoustic performance will be achieved on site.
- Fire resisting acoustic doors also available.
- High quality appearance with veneered, laminate or paint finishes. Can be matched to non-acoustic and fire doors throughout a scheme.
- Matching or complementing acoustic wall and ceiling panelling (*see separate brochure*).
- Available in a comprehensive size range.
- Can be used with carpet or sheet/tile floor finishes.
- Glazed apertures can be provided whilst retaining acoustic performance.
- Manufactured using environmentally friendly and sustainable materials.
- High levels of mechanical performance, strength and dimensional stability.



Appearance

Shadbolt doors and panels are available in a wide-ranging choice of wood veneers which may be lacquered in clear or coloured finishes. Where a flat colour effect is required, special finishes include a variety of lacquers available in a huge colour collection, or plastic laminates from any of the major UK suppliers.

Doors are fully finished in controlled conditions in our works to ensure high quality. Co-ordinated appearance can be achieved for all doors in a building. Doors can also be matched to wall panels, skirtings, trims etc.

Wood veneers

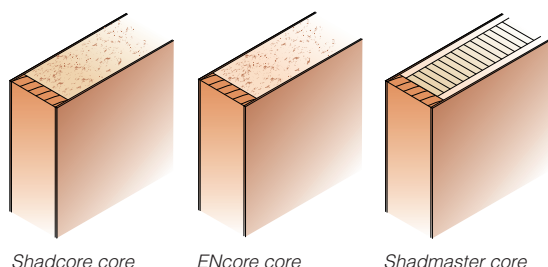
Our extensive factory stock of veneers is available for inspection, and our renowned Green Box contains samples of some 50 veneer species. Advice and loose leaf samples are available to specifiers with whom we are actively working.

Veneers should be chosen and reserved at an early stage in a project, so that sufficient quantities can be set aside in our works.

Factory-applied finishes to veneered doors include semi-matt or high-gloss clear or stained finishes, Paintmaster satin lacquer in any BS or RAL colour. Other effects include decorative inlays, stile and rail effects and panelled effects.

Door construction

All doors have a solid core with edges lipped as required. Core material is chosen in consultation with Shadbolt according to size and performance specified.



Shadcore and ENcore have a high density solid chipboard core giving consistent performance and durability.

The Shadmaster core comprises narrow laminated spruce sections faced on both sides with chipboard, providing outstanding stability and accuracy.

Frames are machined hardwood, MDF or softwood. Designs of frames, linings and architraves can be varied to specifiers' requirements.

Seals and non-protruding ironmongery can be fitted, and glazed apertures included, all as required.

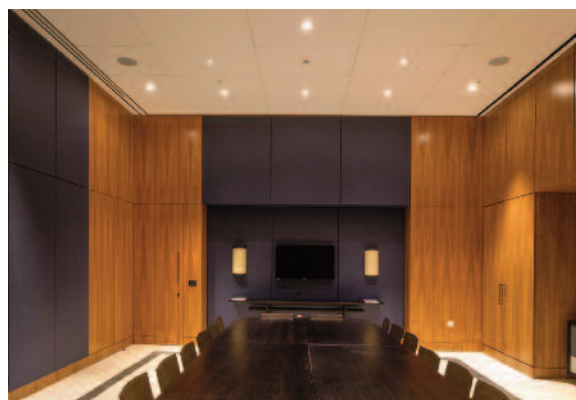
Subframes can be supplied to ensure co-ordination with other components and enable manufacture of doors before structural openings are complete.

Sizes

All acoustic doors and doorsets are purpose-made to sizes required. Performance in an extensive size range is validated by independent testing.

Doorset configurations

Doorsets can be supplied in many configurations, for example with door height or storey height frames, with or without overpanels and side panels, in equal or unequal pairs, and for single or double action.



Acoustic performance

Doorsets can be supplied with sound reduction up to 36dB for standard construction or up to 44dB for high performance. For a performance summary see our website.

We have tested a wide range of doors including single and double, non-fire and fire resisting, flush and glazed, in accordance with BS EN ISO 10140 and rated according to BS EN ISO 717-1 as required by Building Regulations Approved Document E.

For standard performance the tested doors were fitted with non-specialised ironmongery and conventionally installed so as to allow normal opening and closing. Thus the test results give a realistic indication of the performance that can be achieved in practice.

Fire resistance

Acoustic doorsets can also be supplied with 30 or 60 minutes fire resistance to (FD30 or FD60). For more information see our website.

Acoustic doorsets providing 90 and 120 minutes fire resistance (FD90 and FD120) can be offered with a lower acoustic performance (32dB max).

Durability

Standard (non-high performance) acoustic doorsets achieved the Severe duty classification, the highest possible, in UKAS-accredited independent testing. This enables the doors to be used in the most demanding areas such as school and hospital corridors, subjected to frequent use and high levels of abuse.

Specification

Specification clauses are given in NBS Plus at www.thenbs.com or on our website. Because our products are purpose-made, specifiers should consult Shadbolt when preparing a specification.

We can provide computerised door schedules allowing quick and accurate revisions, enabling us to easily handle many variants in large and complex projects.

Installation and maintenance

Correct installation of a door is fundamental to its performance; it is strongly recommended that doors are fitted by an accredited installer.

Regular inspection and maintenance are also essential to ensure that doors retain their design performance throughout their life.