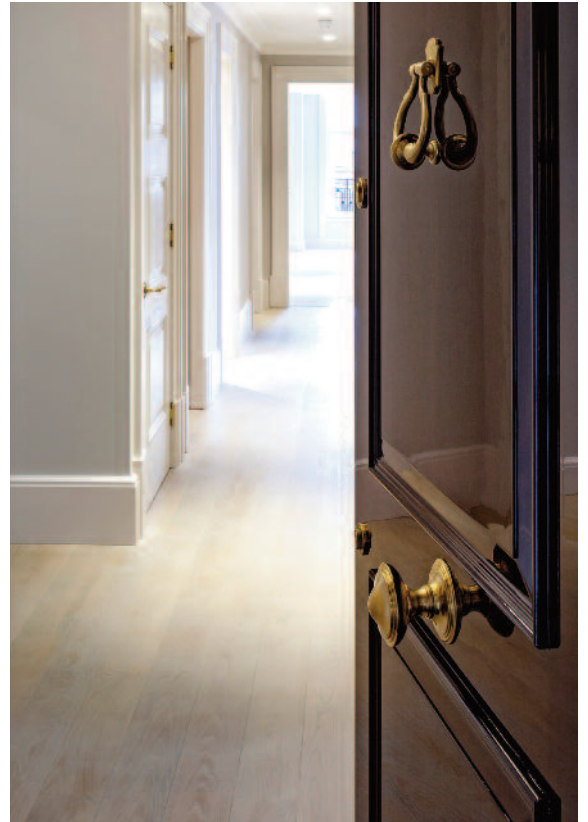


Veneered panelled doors and doorsets

Shadbolt panelled doors and doorsets combine a high quality panelled appearance with modern performance standards.

- They complement both contemporary and traditional aesthetics, and will enhance any high quality interior.
- Purpose-made using the best features of traditional and modern construction.
- Full design freedom (subject to practical requirements) in a wide choice of veneers and other finishes.
- Available as doors or doorsets, and as single or double doors.
- Up to 60 minutes fire resistance possible for many designs.
- Exceptional stability and mechanical performance.
- Period designs are invaluable for refurbishment of historic buildings.
- Glazed panels can be provided whilst generally retaining performance (subject to size limits).



Shadbolt Veneered panelled doors and doorsets

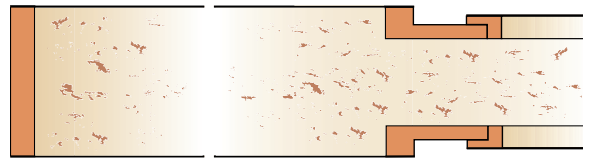
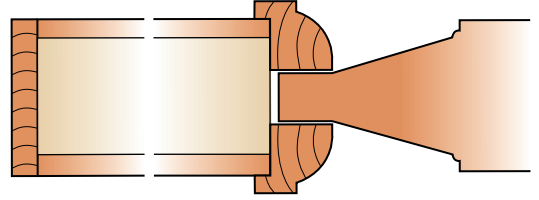
Door styles and construction

There are two ranges of designs, in a wide choice of veneered and coloured lacquer finishes, and available with glazed panels. Any practical frame profile and door surround can be provided to order, as can any suitable approved ironmongery.

Period panelled doors have a traditional appearance, usually with shaped panels and decorative moulded beadings. Panels may be solid hardwood, hardwood faced, or veneered core material, with hardwood beadings.

Contemporary panelled doors have a modern appearance, using various treatments such as recessed plain panels, grooves, orientation of veneer grain.

Examples are shown here. For the full range, more finishes and more examples of construction, see our website.



Period panelled doors



Contemporary panelled doors



Shadbolt Veneered panelled doors and doorsets

Door designs

Each range is available in a series of panel designs. The illustrations here show examples in veneered or paint finishes, or with glazed panels. Many other

choices are available for veneers, lacquers in a wide range of colours, other glazing styles and door furniture. Special panel designs may also be prepared.

For more variations see our website.

Period panelled doors



Veneered



Veneered, glazed



Lacquered

Contemporary panelled doors



Veneered



Veneered, glazed



Lacquered

Veneered panelled doors and doorsets

Finishes

Doors are available in a wide choice of wood veneers which may be lacquered in clear, stained or coloured finishes.

Where solid colour is required, lacquers are available in a huge collection of colours.

Doors are fully finished in controlled conditions in our works to ensure high quality.

Co-ordinated appearance can be achieved for all doors in a building. Doors can also be matched to wall panels, skirtings, trims etc.

Wood veneers

Our extensive factory stock of veneers is available for inspection, and our renowned Green Box contains samples of some 50 veneer species. Advice and loose leaf samples are available to specifiers with whom we are actively working.

Veneers should be chosen and reserved at an early stage in a project, so that sufficient quantities can be set aside in our works.

Factory-applied finishes to veneered doors include semi-matt or high-gloss clear or stained finishes, Paintmaster satin lacquer in any BS or RAL colour.

Specification

Specification clauses are given in NBS Plus at www.thenbs.com or on our website. Because our products are purpose-made specifiers should consult Shadbolt when preparing a specification.

We can provide computerised door schedules allowing quick and accurate revisions, enabling us to easily handle many variants in large and complex projects.

Installation and maintenance

Correct installation of a door is fundamental to its performance; it is strongly recommended that doors are fitted by an accredited installer.

Regular inspection and maintenance are also essential to ensure that doors retain their design performance throughout their life.

